
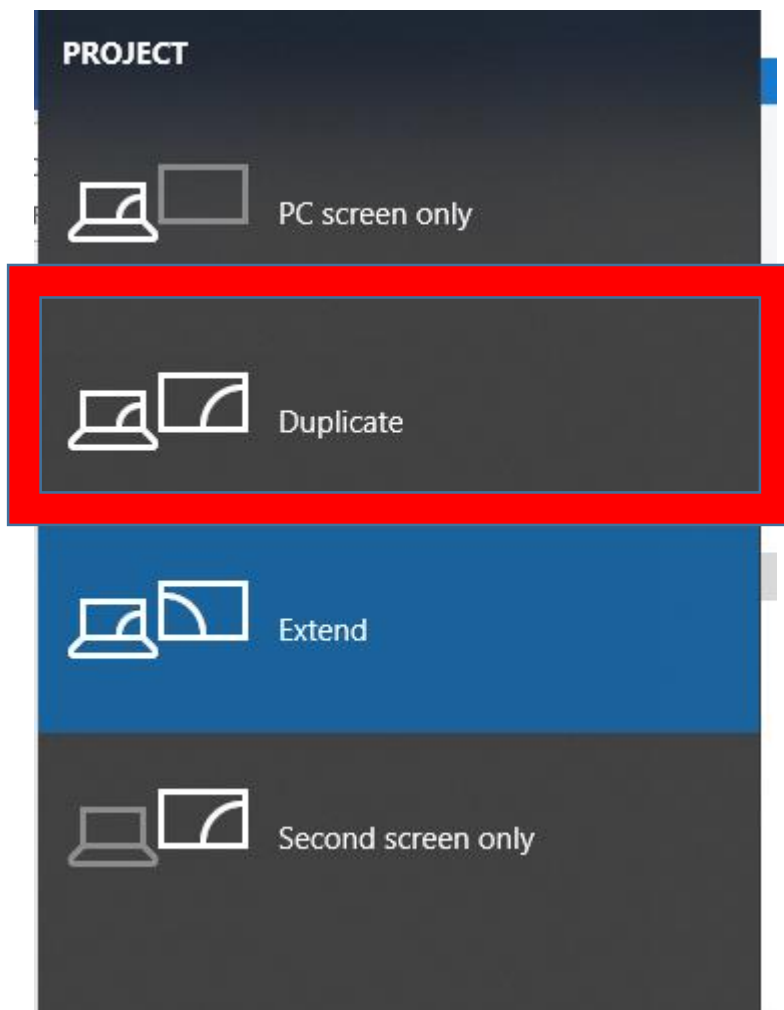


## Connecting with projectors with Windows 10

If you are having issues with a blank/ black/ Windows 10 background image when connecting to a projector

and not displaying the same on the laptop screen then please press the **Windows key**  **and P** at the same time which will display the following on your screen,

please change this to duplicate to resolve this issue



Thank you for your patience and let us know if you require any further help

ICT Support